

INTRODUCTION

The iProx TCP54A controller is a powerful offline solution for access control and time recording / attendance. It can accept up to 5,000 ID card users and store 50,000 transaction records. Transaction records in offline readers can be downloaded to NET Attendance software easily. Hence, reports can be generated accordingly. An electric strike can be connected. Door lock will be released by authorized cards. The controller's states and card information can be uploaded by the NET Attendance software through the network.



PCB & WIRING INFORMATION

POWER THRU ETHERNET CABLE

Insert 4 jumper caps to enable this feature. The power supply can then feed thru the ethernet cable to the unit.

POWER TERMINAL

- Connect to the 12VDC power for the reader

SLAVE TERMINAL

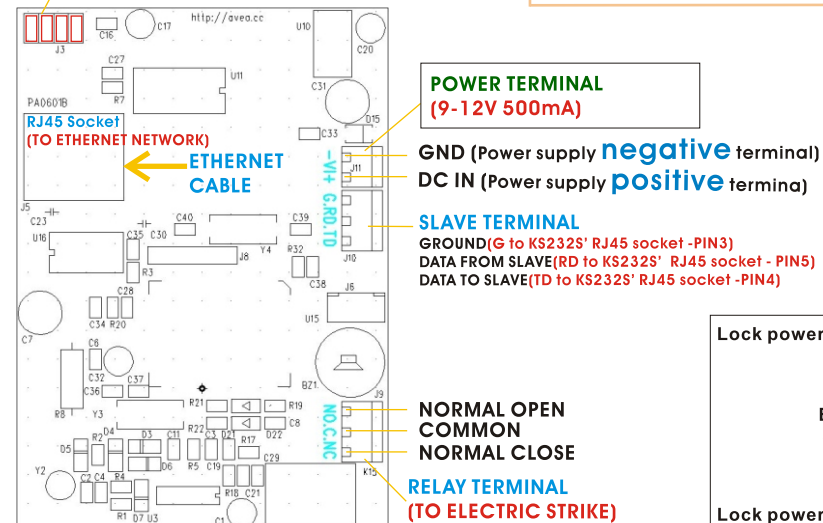
- Connect to a slave reader

RELAY TERMINAL

- SPDT relay output for electric strike control

RJ45 SOCKET

- connect to the ethernet network



KEYPAD FUNCTIONS

" * " - Check **MEMORY USAGE**



Number of registered ID card in reader

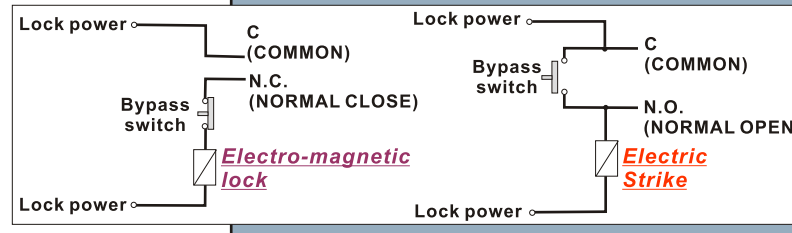
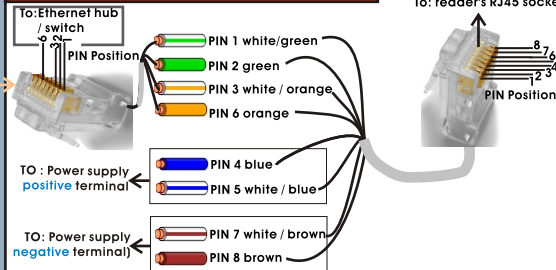
Number of transaction records used / stored in reader

" # " - Use in **CLOCK mode** with **Auto IN/OUT Timetable** (offline)
Press " # " to override from IN to OUT or vice versa for clocking

POWER FAILURE

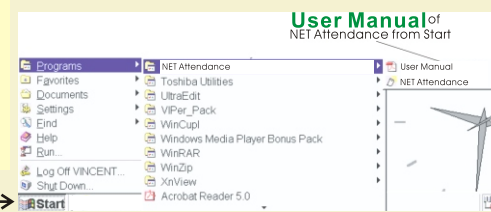
In case of a long time power failure, the real time clock will be stopped and incorrect. The LCD display will not show the current time but with a running bar. Records of entrance will not be stored. Clock synchronization is required by powering up the PC and the NET Attendance software. The NET Attendance software will synchronize the clock in iProx automatically.

POWER THRU ETHERNET CABLE

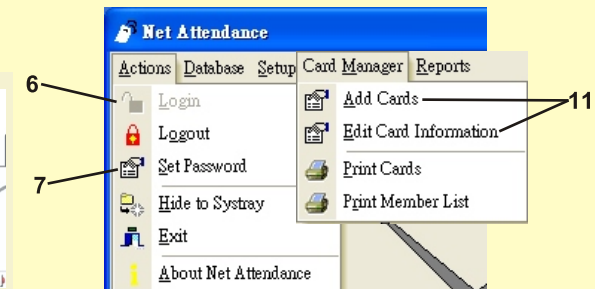
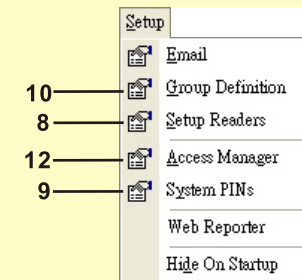
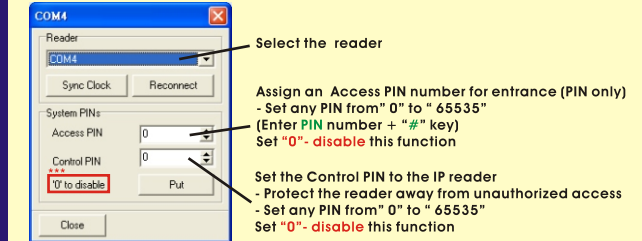


NET ATTENDANCE - QUICK START

1. Connect **cables** and **power** (see Wiring Instruction)
2. Setup the reader's IP address and parameters (see Reader Setup)
3. Turn on the computer.
4. Insert the **NET Attendance CD** into your computer's CD-ROM drive. The Installer will start by itself automatically. If the Installer doesn't start automatically, you can run the setup.exe program to install the software. The detailed installation manual for the NET Attendance will be automatically installed into your computer when you install the application software. Follow the installation instruction to finish the installation.
5. **Print** and follow the **User Manual** of NET Attendance from **Start**
For details of NET Attendance's Setup.
6. **Login** the NET Attendance to start SETUP.



7. Setup the **password** for LOGIN (Password cannot be reversed)
 8. Setup the **RFID reader**
 9. Setup the **System PIN**
 10. Define the **workgroup** for reports
 11. **ADD Cards** and enter **Card Information** by selecting the serial number of ID cards (with the ID cards' packing)
 12. **Goto the Access Manager**, click **"PUT"** to put setting to reader & click **"UPLOAD TO READER"** to upload card information to reader
- *** Please see User Manual of NET Attendance for details of Access Manager setup.

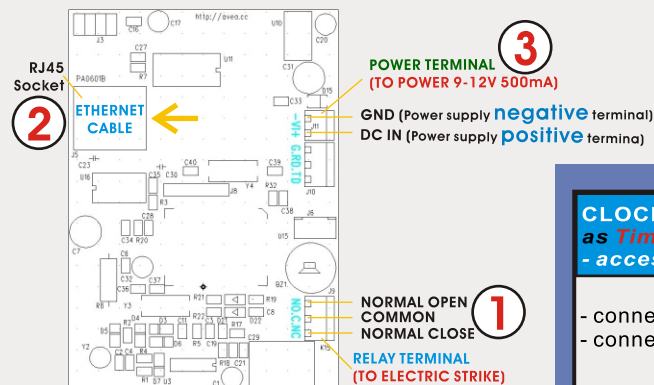


FOUR MODES OF OPERATION - Wiring Instruction

IN Mode Access Control (Single reader - outside the premises)
- for Entrance with or without PIN

In this mode, the unit is installed outside the premises.

1. connect an electric strike to the RELAY TERMINAL
2. connect Ethernet to the Rj45 socket
3. Connect the POWER

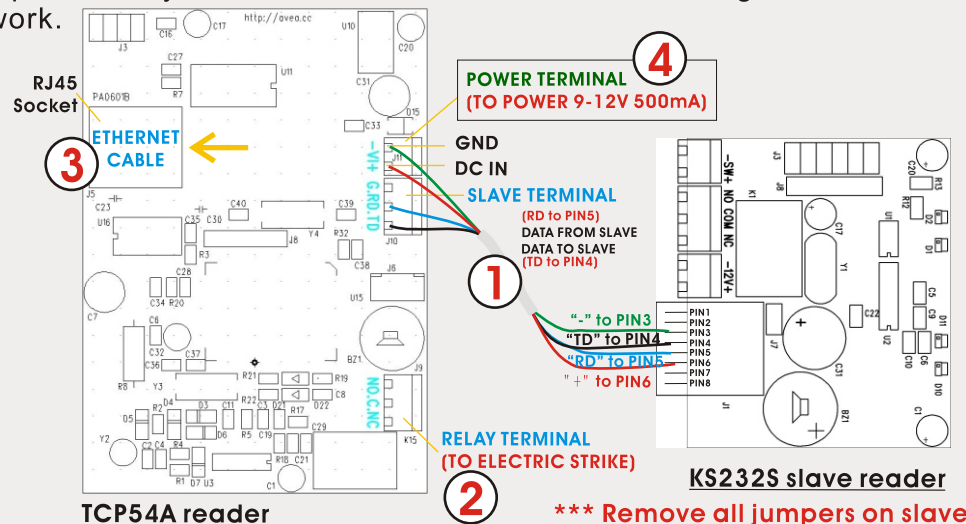


CLOCK Mode :
as **Time Clock/ Time Recorder**
- access control feature is disabled

- connect power to the POWER TERMINAL
- connect Ethernet to the RJ45 socket

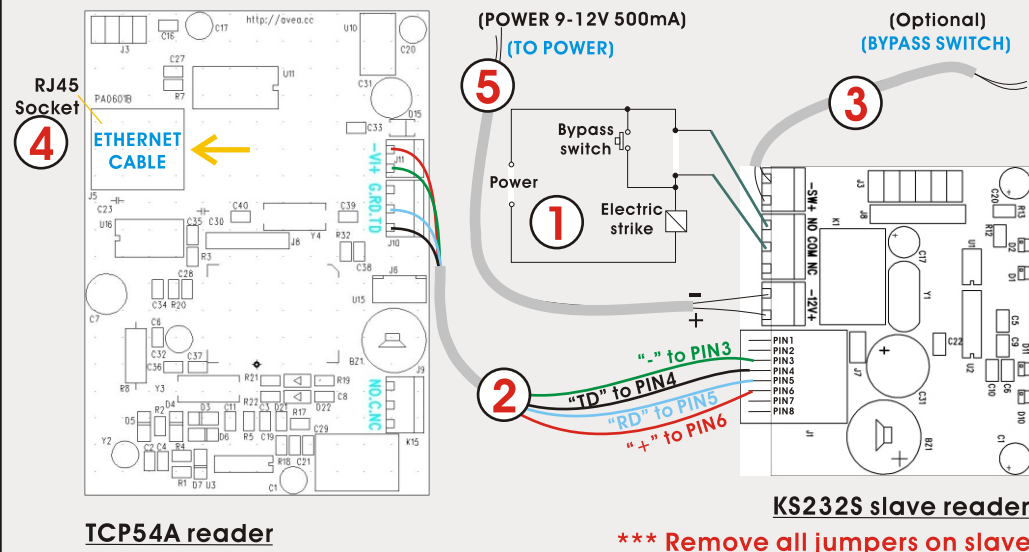
OUT Mode + Slave	Access Control (Dual readers) TCP54A as MASTER for exit + KS232S as SLAVE for entrance
------------------	---

In this mode, the unit is installed inside the premises as the master. A KS232S is installed outside the premises as the slave unit. An **electric strike** is connected to the master inside the premises. Authorized cards will release the strike. The controller's states and card information can be uploaded by the NET Attendance software through the ethernet network.



IN Mode + Slave	Access Control (Dual readers) TCP54A as MASTER for entrance + KS232S as SLAVE for exit
-----------------	---

In this mode, the unit is **installed outside** the premises as the master. A KS232S is installed inside the premises as the slave unit. An **electric strike** and a **bypass switch** are connected to the slave and are installed inside the premises. Pressing the bypass switch or presenting the authorized cards will release the strike.



TCP54A READER SETUP

To enter **configuration mode**: hold the '*' key while **applying the power** to the reader. 'CONF' will be shown on the reader. Place an ID card over the reader will register a 'MASTER' card to configuration later without power off the reader. By presenting the 'MASTER' card to the reader, it will enter the configuration mode directly.

Press '*' to cycle the parameters to be configured:

Parameter	Description	Default
IP	IP address of the reader itself	192.168.1.234
Gate	Gateway IP address	192.168.1.1
Net	Netmask	255.255.255.0
Port	Port number	1668

To edit the parameter, press '#' key. '.' is entered by pressing '#' key, i.e. use enter 192.168.1.123, the key sequence is 192#168#1#123, then press '#' key to confirm entry or '*' key to cancel the operation.