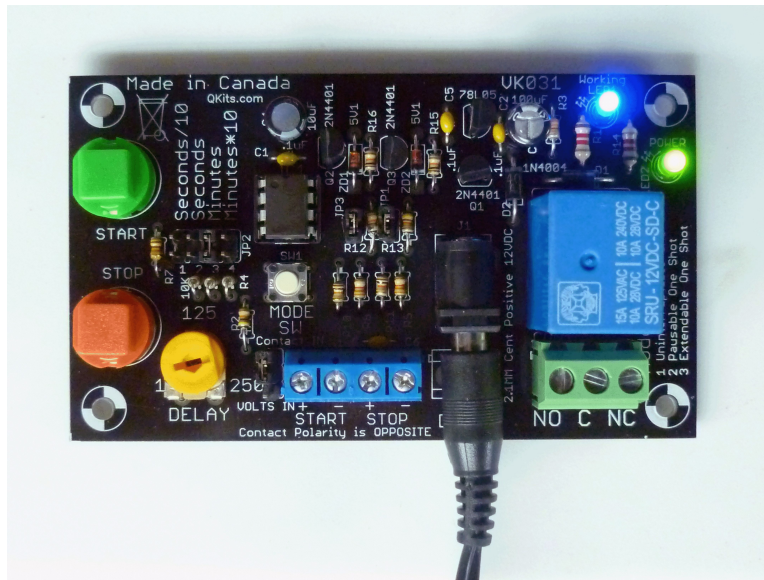


Start/Stop Timer with Pause Ability

VK031

This Start Stop timer has multiple operating modes.



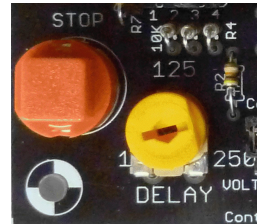
Similar to our VK111 this timer has 2 buttons, one for Start and one for Stop. Using the on board pushbutton you can configure the VK031 for several different methods of operation.

- Normal Start Stop, Pause-able Start Stop and extend able modes.
- 11 – 15 VDC input voltage, max draw 35 mA.
- Relay contact out, 220 Volts up to 5 amps.

QualityKits

Easy to set seconds minutes and even hours. Perfect for simple timing tasks. Use for any application that requires simple cycling timer.

The On time adjust has a 1 to 250 range, for seconds this can be divided by 10, to make say setting 15 seconds easy.



The range can be 1 to 250 minutes, or minutes multiplied by 10 for 2500 minutes. This works out to just over 41 hrs. Power supply, 12 volts DC at 30 mA, both contacts are available from the relay, normally open and normally closed. Loads of 200 Volts at 5 amps can be switched.

The Mode switch allows the VK031 to operate in one of many modes. Pressing the mode switch will pulse the relay ON and Off to indicate which mode is selected. If you wait 10 seconds the mode will once again flash the current mode state and exit the mode set subroutine.



MODE1 Pressing the Start button executes the On Delay, interrupt the cycle at anytime by pressing stop. Pressing Start has no effect on operation while the relay is ON, pressing Stop will turn the relay Off. Pressing Start again (after Stop) will restart the timer with the values selected.

MODE 2 Press the Start button to energize the relay, press Start again at any time to pause the delay, pressing Stop clears the delay and waits for the Start button to be pressed, starting a new cycle. Pressing the Start button again closes the relay contacts and continues with the delay remainder if

QKITS LTD
2 – 620 CATARAQUI WOODS DR
KINGSTON ON K7P1T8
613 544 6333
www.QKits.com

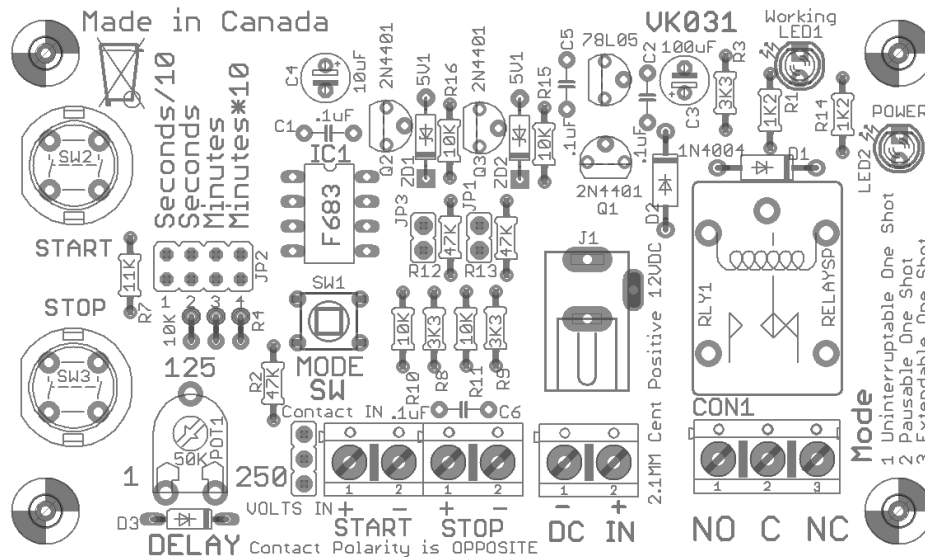
there was any.

MODE3 Extend-able, pressing the Start button will add more ON time cycles together .

The VK031 has external START STOP inputs, they can be either contacts or a voltage but not a mixture of both. Input voltage of up to 48 volts for the trigger and down to 3 volts, selectable by on board jumper, the low range is good up to 13 volts IN, the high range is for 12 volts to 48.



Also has the ability to use dry contacts, set the jumper for contacts (shown to the left of the connector above) and use any dry contact to control the timer. In this mode the 5 volt power supply of the circuit is feed to the negative screw terminal connections, never apply a voltage when in this mode to any of the input connections, only a dry contact can be used, it (the contact) needs to be isolated from ground that the 2 circuits may share. Some input circuitry was used to condition the input, if something goes wrong at least these parts can be obtained and replaced easily.



UK031 QKits.com

QKITS LTD
2 – 620 CATARAQUI WOODS DR
KINGSTON ON K7P1T8
613 544 6333
www.QKits.com

